

Smart Gateway

Model PRGEN-SGAT

SMARTREK Datasheet Smart Gateway

Why use the A-Link Smart Gateway

Every wireless sensor network (WSN) deployed with our ATRAX products requires a network coordinator, which the Smart Gateway fulfills. The working relationship between the A-Links (nodes) and the gateway allows the creation of a private WSN, enabling the transmission and reception of data collected across the SpiderMesh network. A SpiderMesh WSN is independent of existing infrastructure and requires no network configuration

- Real-time insights into your operations
- Proactive and efficient management with online dashboard, reports, and alarms
- An assurance of compliance with regulations or with your own standards
- Easy installation and maintenance free
- Reduce manpower



Figure 1: Smart Gateway

Features

- Ethernet and WI-FI interface
- Easy configuration via access point and Smart Gateway Communicator software
- Preconfiguration according to your network (optional)
- Up to 10 km range
- Internal battery back-up with up to 32 hours autonomy
- Provide connectivity between SpiderMesh A-Link and the internet
- LPWAN
- Up to 100 sensors (Contact us for system with more than 100 devices)

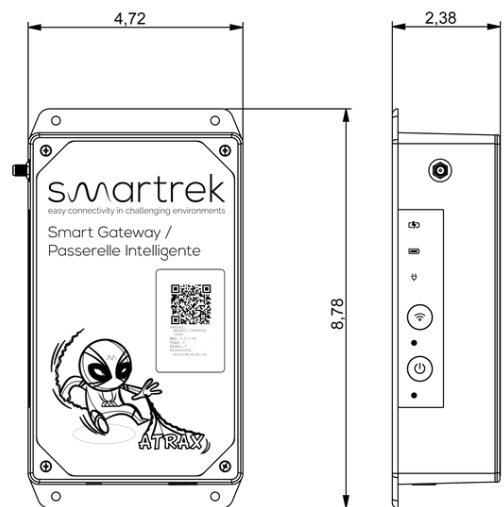
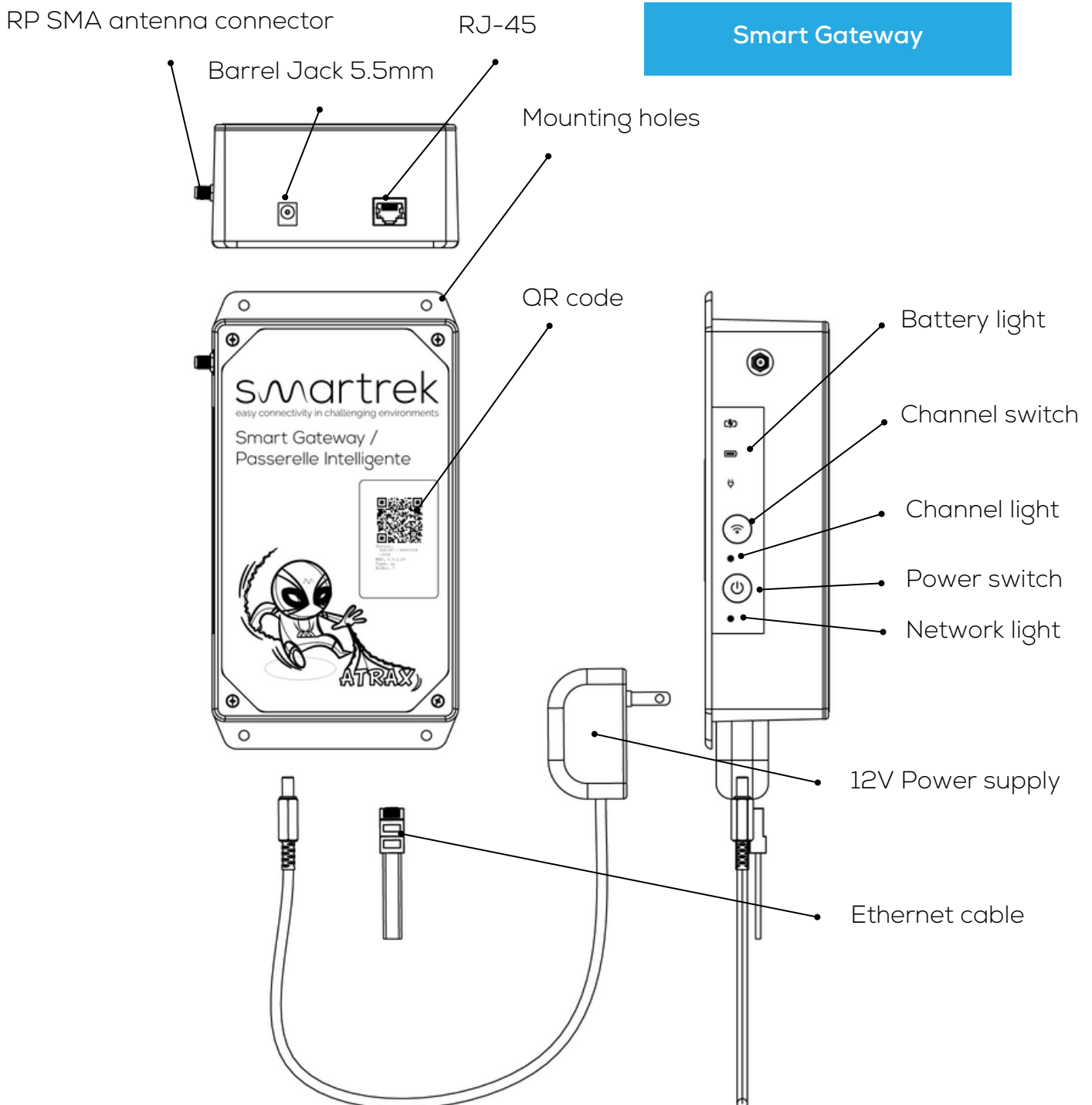


Figure 2: Technical drawing

Description

The Smart Gateway controls the entire SpiderMesh wireless cooperative mesh network by coordinating the wireless data being exchanged between the A-Links. Once data has been received at the Gateway, data is uploaded to the Cloud either by WI-FI or an ethernet connection, enabling remote access to all the system's live and historical data.



General specifications

Specifications	Performance
Frequency Band	North America: 902-928MHz Europe, Australia/ NZ: 860MHz Japan: 925MHz
Wireless technology	SpiderMesh
Encryption	AES-128
Range	Up to 10km/7Miles (LOS*) 500m average (NOLS**) 300m (decidious forest)
Max hop count	30 (total range is 30x node-to-node range)
Max number of A-Link on network	100***
IP address assignation	DHCP or static
Online data access	Smartrek web application, Rest server
Back up Battery life	32 hours
Internet connection	Ethernet and Wi-Fi

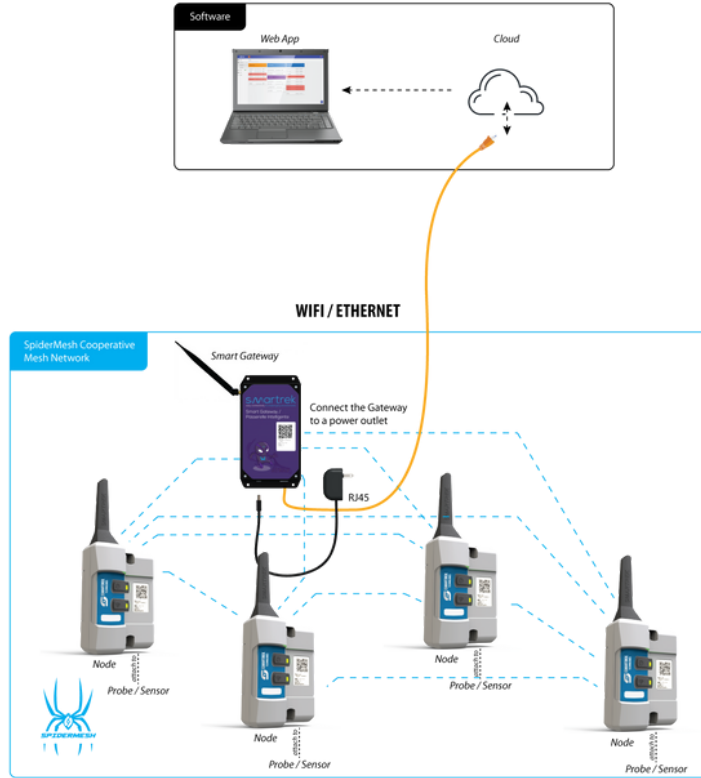
*LOS: line of sight **NLOS: near line of sight

Technical specifications

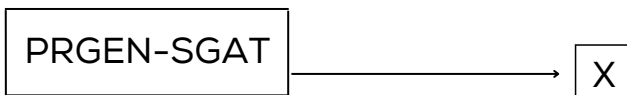
Specifications	Performance
IP address assignation	DHCP or static
Online data access	Smartrek web application, Rest server
Back up battery life	32 hours
Internet connection	Ethernet and Wi-Fi

***Contact us for system with more than 100 devices

Typical application of the Smart Gateway



Ordering information



Radio Freq band:
 1: NA (920MHz)
 2: EU (860MHz)
 3: AU (860MHz)
 4: JP (925MHZ)